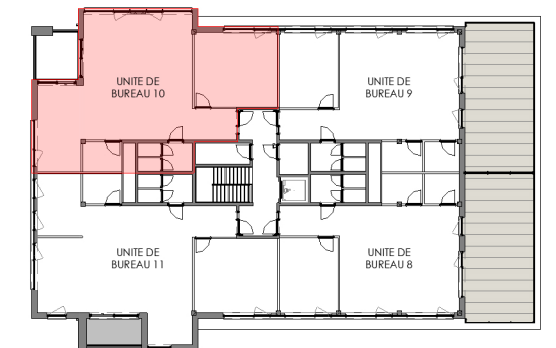


Unité de bureau 10

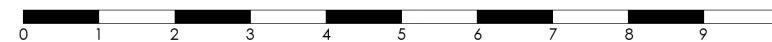
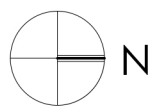
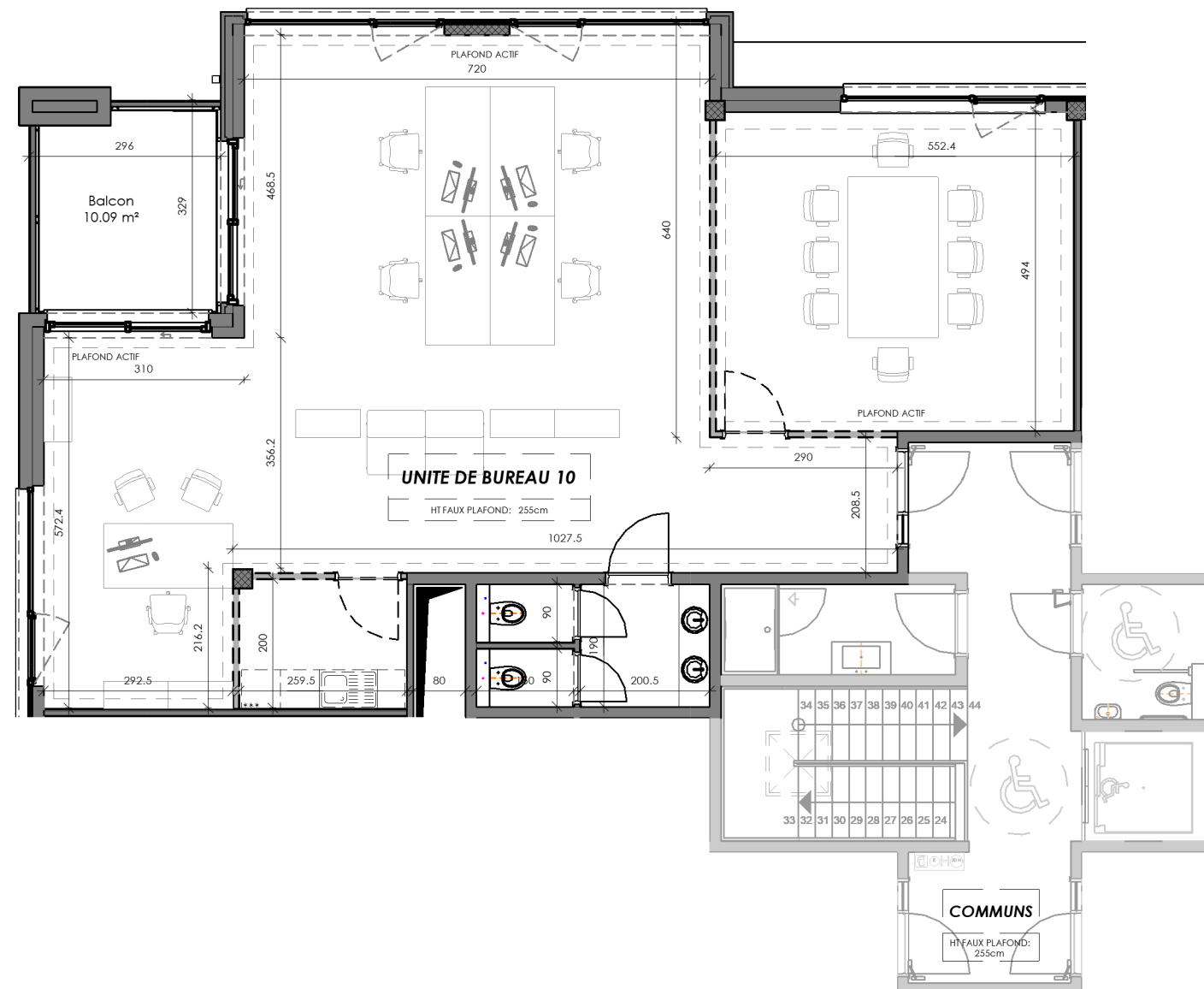
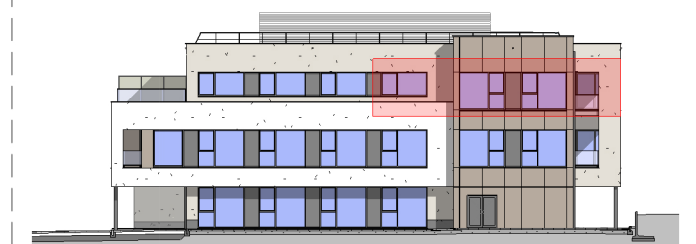
Situation: 2ème étage
 Orientation: Façade arrière
 Surface brute: 159.45 m²
 Surface balcon, terrasse: 10.09 m²

Localisation

Vue en plan - 2ème étage



Élévation - Façade arrière



STADE COM
 01.06.2022
 TRANSMIS
 01.06.2022

MAITRE DE L'OUVRAGE :
 Le Lorrain Immo SPRL
 Avenue Cardinal Mercier 9, 5000 Namur

DEVELOP
 REAM Group

SIA
 architects

HBC - Hydrion Business Center

INDICE
03

ECHELLE
 1/100

FEUILLE
 16

Unité de bureau 10

PLAN N°
 351-HBC-AR-COM-03