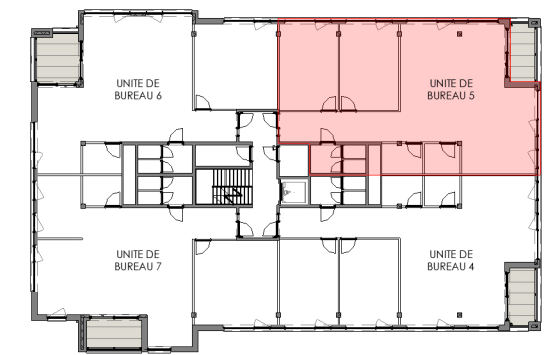


Unité de bureau 5

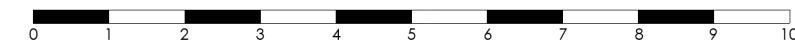
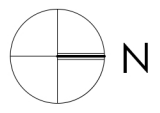
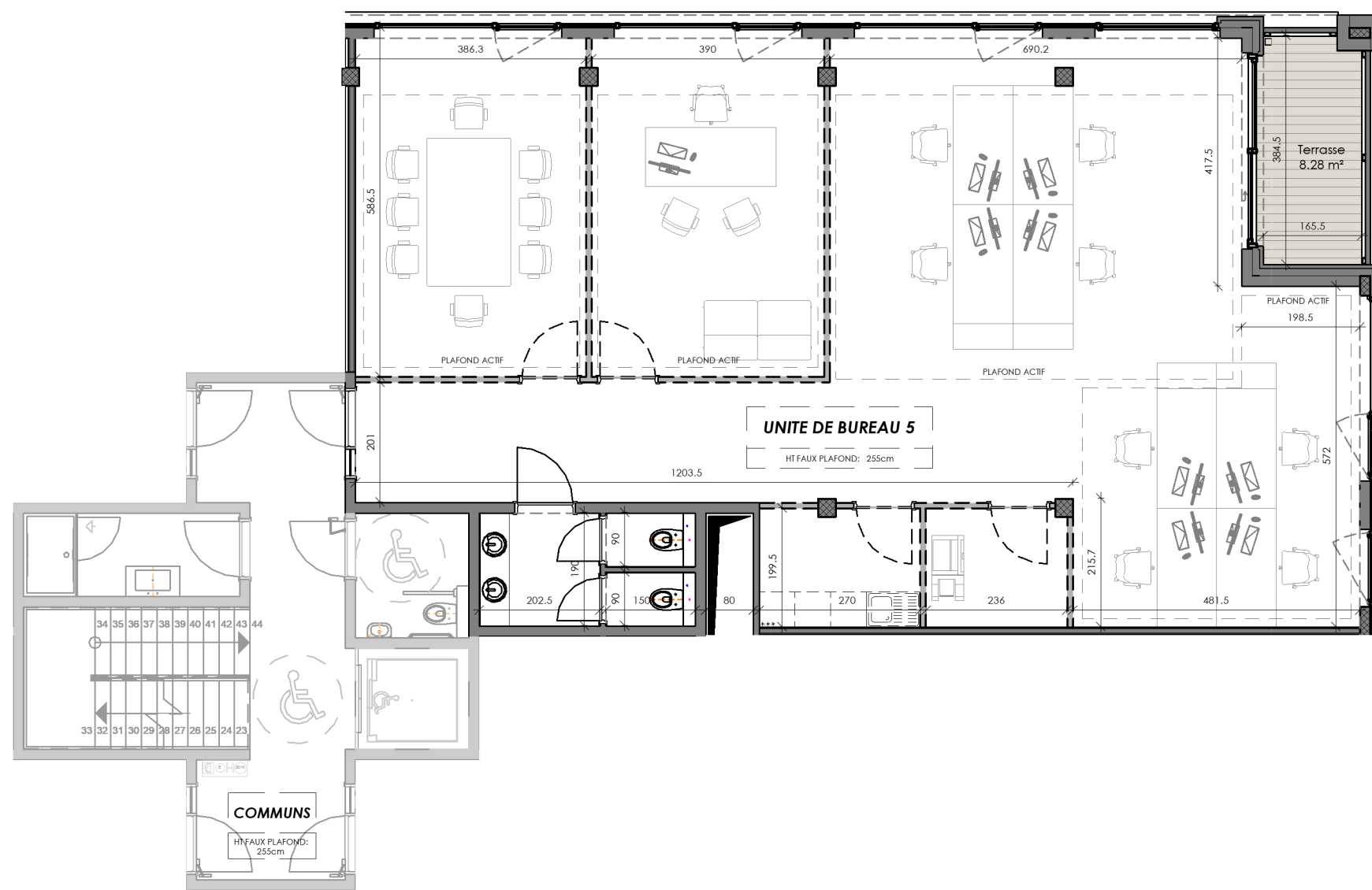
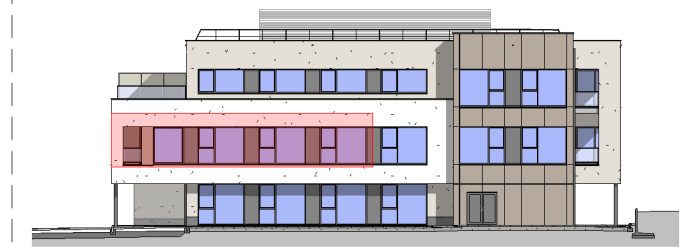
Situation: 1er étage
 Orientation: Façade arrière
 Surface brute: 191.14 m²
 Surface balcon, terrasse: 8.28 m²

Localisation

Vue en plan - 1er étage



Élévation - Façade arrière



STADE COM 01.06.2022 TRANSMIS 01.06.2022	MAITRE DE L'OUVRAGE : Le Lorrain Immo SPRL Avenue Cardinal Mercier 9, 5000 Namur	DEVELOP REAM Group	SIA architects	HBC - Hydrion Business Center	INDICE 03	EHELLE 1/100
FEUILLE 10				Unité de bureau 5	PLAN N° 351-HBC-AR-COM-03	